



Heights

The word **MUST** means it is a mandatory requirement. Where you see the words **YOUR CALL** it means you are strongly advised to do this, but you can use your judgement.



Barriers and edge protection

Edge protection **MUST** be engineered and capable of withstanding the loads that may be applied.

Barriers/edge protection **MUST** include a top guardrail or component between 900mm and 1100mm above the working surface.

Edge protection **MUST** be installed per the manufacturer's guidelines and verified by competent persons.

Elevated Work Platforms (EWP)

EWPs **MUST**:

- not be used as a means of entering/exiting a work area.
- only be used on a solid level surface, unless it is designed for use on rough terrain.
- EWP workers **MUST** not work alone.

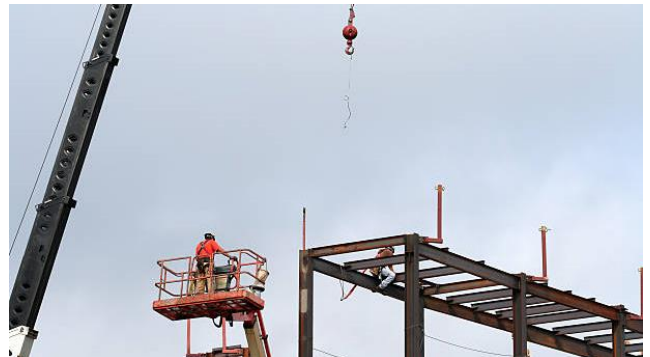
Support Personnel who are familiar with the EWP's emergency descent controls **MUST** be present, maintain positive communication, and remain in the operator's line of sight.

Covering opening, holes, and penetrations

Any openings, holes or penetrations that are a risk to those working around them **MUST** be covered to prevent any accidental falls.

Covering materials **MUST**:

- be made from material strong enough to prevent people, objects, and plant falling through. (i.e., double 19mm ply for people and objects, steel plates for plant)
- be securely fixed
- include signage indicating its purpose (e.g., DANGER: PENETRATION BELOW).





Essential guide: our Critical Risk expectations

Heights

The word **MUST** means it is a mandatory requirement. Where you see the words **YOUR CALL** it means you are strongly advised to do this, but you can use your judgement.



Fall restraint and fall arrest systems

Fall restraint or arrest systems **MUST** be designed, selected, used, and maintained in accordance with the manufacturer's requirements.

They **MUST** be capable of withstanding the force applied to it (including anchor points)

They **MUST** be verified by a qualified person and installed as per design prior to initial use.

They **MUST** have components regularly inspected and serviced and verified by a qualified person.

Access and egress

A safe means of access and egress to/ from elevated work areas **MUST** be provided. Access **MUST** be planned for in the event of an emergency.

Unauthorised access **MUST** be prevented (e.g., use of barriers, locking systems etc.).

Risk of falling objects

The risk of falling objects **MUST** be controlled in one or more of the following ways:

- tools, equipment, and objects **MUST** be secured by lanyards.
- barriers, screens or catch nets to prevent objects from dropping into work areas below.
- exclusion zones established below the work area.

Find out more at dropsonline.org

