



Essential guide: our Critical Risk expectations

Electricity

The word **MUST** means it is a mandatory requirement. Where you see the words **YOUR CALL** it means you are strongly advised to do this, but you can use your judgement.



Switchboards

The installation of any construction or temporary switchboard **MUST** be undertaken by a qualified / competent electrician.

Switchboards **MUST** be made to withstand the elements, be of robust construction and weatherproof.

Switchboards **MUST** be secured against unauthorised removal and damage from environmental factors.

A Certificate of Compliance (CoC) **MUST** be issued and available for each Installed switchboard.

Construction wiring

All temporary or construction wiring **MUST** be maintained in the form of site layout diagrams or As Built drawings.

Temporary or construction wiring **MUST** be distinguishable from permanent wiring and clearly marked.

Temporary or construction wiring **MUST** be protected from any mechanical damage.



Residual Current Devices (RCD)

Electrical outlets **MUST** be RCD protected, this includes portable generators. Portable RCDs, including those on portable equipment, **MUST** be tested daily.

When in use, you **MUST** also test them when connecting to electrical sockets and equipment.

Where an RCD is of a fixed type it **MUST** be tested on a regular basis.

Schedules **MUST** be in place to test all fixed RCDs.

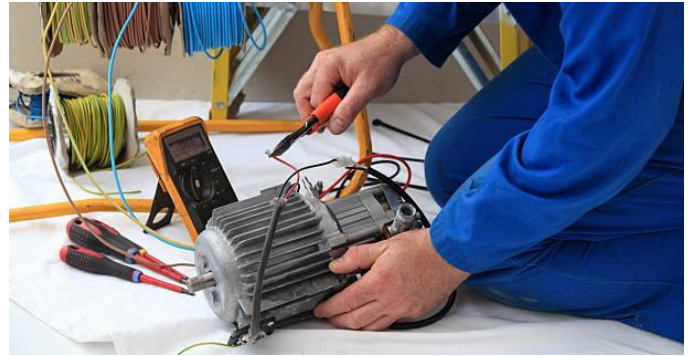
Where an RCD is faulty, it **MUST** be tested and reset by an authorised person.



Essential guide: our Critical Risk expectations

Electricity

The word **MUST** means it is a mandatory requirement. Where you see the words **YOUR CALL** it means you are strongly advised to do this, but you can use your judgement.



Electrical tools and equipment

All electrical tools and equipment **MUST** be tested and tagged prior to use. Regular checks **MUST** be made to ensure that no damage has occurred.

Any unsafe electrical tools and equipment **MUST** be disconnected and isolated from the electrical supply, they **MUST** be tagged out and sent for repair.

Extension leads **MUST** be of a heavy-duty construction, tagged and tested.

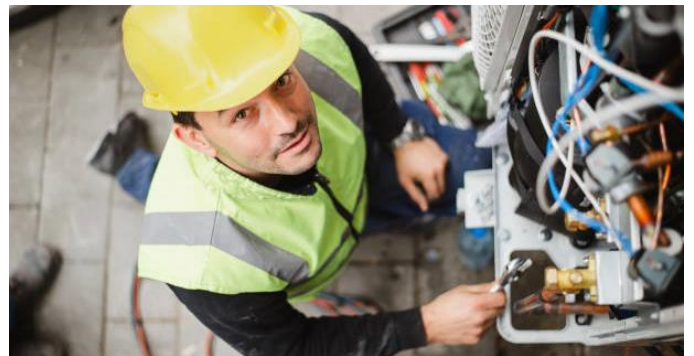
Correct tools and equipment **MUST** be used when performing any electrical work. They **MUST** be in good condition, inspected, tagged, and tested.

Electrical work

All electrical work **MUST** be undertaken by suitably qualified electrical personnel.

Prior to any electrical work being undertaken, all energy sources **MUST** be isolated, managed under the applicable permit and proven safe.

Where work is being undertaken in close proximity to live wiring, notification and signage **MUST** be installed to inform those working in the area of any potential risk.



Inspection and testing

The testing and tagging of any electrical tools and / or equipment **MUST** be performed by an approved person who holds the appropriate qualifications.

Project sites **MUST** establish a schedule of inspection for all electrical tools and equipment on site.

All transportable structures, fixed and transportable equipment **MUST** be tested on a regular basis in accordance with any regulations.